


Switchover Help Scheme

We can help you convert your TV to digital if you:

- Are aged 75 or over, or
- Have lived in a care home for six months or more, or
- Get (or could get) certain disability benefits, or
- Are registered blind or partially sighted.



helping you go digital 

Help is at hand with the digital TV switchover

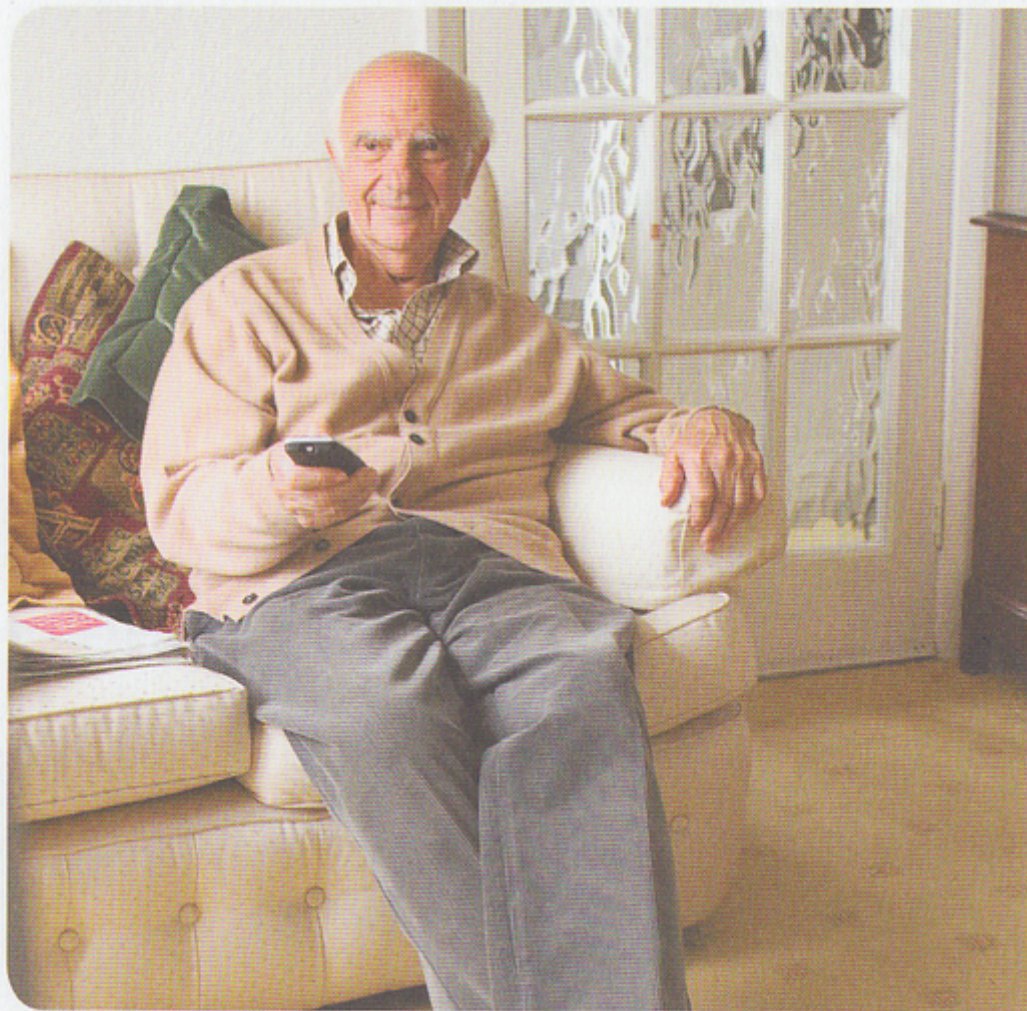
TV is going digital all over the UK and soon the older, analogue TV signal will be switched off in your area. If you don't have digital TV by the time of switchover, you will lose your TV service. But you don't need to worry. The Switchover Help Scheme is here to help.

What does the Switchover Help Scheme do?

We help eligible people convert one of their TV sets to digital. If you're eligible, we'll explain digital TV to you clearly and simply. We will tell you about all the options available to you. We can install what you need in your home. And we will make sure you are happy with how it all works.

How do I know if I have digital TV?

If you get more than five channels on one of your TVs, you probably already have digital TV. If not, you may need our help. We'll make it easy for you to go digital and you won't even have to change your TV set.



Questions? Call 0800 40 85 900 or visit helpscheme.co.uk

Am I eligible?

We can help you if you:

- Are aged 75 or over, or
- Have lived in a care home for six months or more, or
- Get (or could get):
 - Disability living allowance, or
 - Attendance or constant attendance allowance, or
 - Mobility supplement, or
- Are registered blind or partially sighted.

Will I have to pay?

We'll ask you to pay **£40** for the standard offer, which includes:

- Easy-to-use equipment that meets your needs
- Help with installing the equipment
- Fitting a new dish or aerial, where we can, if it's needed to make the new equipment work
- A demonstration and someone you can call for help while you're getting used to things.

This service is **free** if you get pension credit, income support or income-based jobseeker's allowance.

There are other options available at an extra cost, which we can explain to you.



Questions? Call 0800 40 85 900 or visit helpscheme.co.uk



Questions? Call 0800 40 85 900 or visit helpscheme.co.uk

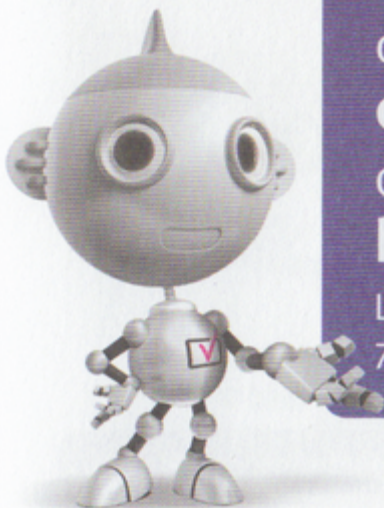
What do I do now?

If you're eligible for the Switchover Help Scheme, we'll write to you in plenty of time to ask if you want our help.

You must have a valid TV licence (free if you're over 75) to get help.

Know someone else who needs help?

You may have friends or family or someone in your local community who will need help with the switchover. If so, please pass this information on to them.



For more information,
call us free on

0800 40 85 900

or visit

helpscheme.co.uk

Lines are open 8am to 9pm,
7 days a week.

If you need this information in a different format such as large print, Easy Read, audio or Braille, or another language, please call free on **0800 40 85 900**.

If you have a hearing difficulty or find it difficult to speak, you can contact our free textphone service on **0800 40 85 936**.

The Switchover Help Scheme is run by the BBC, under an agreement with the Government. We help older and disabled people who may find it difficult to switch to digital TV.

The Switchover Help Scheme is managed on behalf of DSHS Limited, by eaga plc, eaga House, Archbold Terrace, Newcastle upon Tyne, NE2 1DB. Company registration number 3858865.

