

BIDEFORD

TOWN GUIDE

2007-2008

Edition VI:
Fully Revised

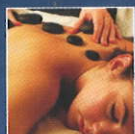


COMPLIMENTS OF BIDEFORD TOWN COUNCIL



DURRANT HOUSE HOTEL

A STAY TO REMEMBER



CHRISTMAS PARTIES · CONFERENCES · BIRTHDAY PARTIES
WEDDINGS · RESTAURANT · SUNDAY LUNCHESES · BAR · LIVE MUSIC



Come and try our new Menu. Cooked by our new award winning chef and served in the elegant surroundings of our Olive Tree Restaurant, you are sure to have a meal to remember. Children welcome.

Enjoy the hotels excellent leisure facilities including our outdoor swimming pool, sauna, solarium and workout room.



01237 472361

www.durranthousehotel.com
info@durranthousehotel.com



CONTENTS

◇ A Very Warm Welcome	5	◇
◇ A Family Favourite with Good Reason	7	◇
◇ Over 30 Years of Twinning	15	◇
◇ Bideford Railway	17	◇
◇ Charles Kingsley: A Famous Son	17	◇
◇ Charters and Arms	18	◇
◇ A Perfect Touring Base For All of North Devon	19	◇
◇ Bideford Map	20 / 21	◇
◇ Bideford Street Index	22 / 23	◇
◇ Sports for All	29	◇
◇ Historic Pannier Market	30	◇
◇ The Quay Fountain	31	◇
◇ Bideford Town Youth Council	31	◇
◇ General Information	33	◇
◇ Food and Drink	37	◇
◇ Notes	38	◇

Published by Plus Publishing Services.

Copyright 2006: Plus Publishing Services, PO Box 276, Ashford, Kent TN24 8GN. Tel: 01233 643574.

Every effort has been made to ensure that the information in the Bideford Town Guide is correct.

Neither Bideford Town Council nor Plus Publishing Services accept responsibility for any loss or inconvenience arising from any errors which may have occurred.



WHEN YOU NEED AN ELECTRICIAN BE SURE BE SAFE

NICEIC Approved Contractors – Fully Part P Compliant

Industrial, Domestic & Commercial • 24 hours call out service, 365 days a year

Testing and inspecting to BS7671 by 2391 qualified testers • Portable appliance testing



NEW TO D S ELECTRICAL

“DESIGNS”



An exciting range of contemporary lighting on show – Interior and Exterior

New showroom open 8am-5pm Monday to Friday or view by appointment out of hours

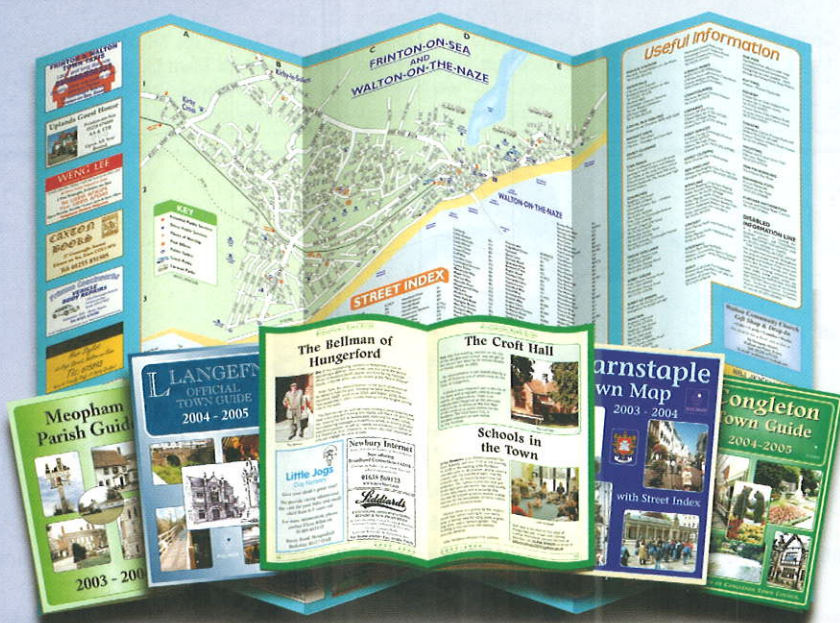
Unit 1, Supreme House, Pitt Lane, Bideford EX39 3JA

Tel: 01237 471 817 Fax: 01237 424 515

Time For a New Town Guide or Town Map?

Town, Parish and Visitor Guides and Maps are welcomed by residents, tourists and newcomers to your community

Professional and informative publications that boost business for local traders



**For further details and free samples contact Paul Smith at Plus Publishing Services, PO Box 276, Ashford, Kent TN24 8GN
Tel: 01233 643574 • Email: plus@public62.freereserve.co.uk**

A VERY WARM WELCOME

BIDEFORD has been welcoming visitors for centuries. They have come by both road and sea. Our location, people, heritage and character continue to appeal to guests and residents alike.

This guide is intended to provide a 'snapshot' of Bideford today while introducing the reader to our history and highlighting many of the aspects and elements of a town which should be seen and enjoyed.

Still a working port, our maritime heritage is well charted. Referred to by Charles Kingsley in *Westward Ho!*, noted in Tennyson's *Revenge* and immortalised in the verse of Edward Capern, Bideford's postman-poet the "little white town" retains its ability to captivate and charm.

Welcome. Bideford looks forward to being your host.

MAYOR OF BIDEFORD



The Kathleen & May

TORRIDGE AUCTIONS

Regular Sales of:

GENERAL HOUSEHOLD GOODS
inc. Garden, Workshop & Office

COMPLETE HOUSE CLEARANCE SERVICE
SORTING - PACKING - REMOVAL TO SALEROOM
STORAGE UNTIL NEXT SUITABLE SALE
DISPOSAL OF UNSALEABLE GOODS



Every 2 months a Sale of

Antiques & Collectables



Call at the office or ring for full details - Tuesday to Friday 10am to 5pm
The Lion Store, 19 Barnstaple Street, East-the-Water, Bideford
(From the Quay - cross the Old Bridge and turn left)
www.torridgeauctions.co.uk for FREE Catalogues & Sale Dates



01237 471955





NORTH HILL

Shirwell, Barnstaple
Devon EX31 4LG

17th Century farm buildings
converted into eight cottages

Set within nine acres of beautiful countryside

- Indoor heated swimming pool and toddler pool
- Children's play area • Games and fitness rooms
- Sauna • All weather tennis court

Contact Carol Ann & Adrian Black
Tel: 01271 850611 / 07834 806434
www.north-hill.co.uk



Flowers for all occasions

Specialists in wedding and funeral flowers

Same day local and national delivery

Please phone us
01237 472339

Broad Quay, Bideford, Devon EX39 4JH
www.blooms-of-bideford.com

BIDEFORD BICYCLE HIRE

Torrington Street, East The Water, Bideford, Devon EX39 4DR

Tel: 01237 424123

TRIKES - TRAILERS - TANDEM - TRAILER BIKES

Ideal location to explore the traffic-free TARKA TRAIL

DON'T GET A NUMB BUM



on our brand new bikes fitted with comfort saddles OPEN ALL YEAR

£1.00 OFF EACH BIKE HIRED FOR A FULL DAY
on production of this advertisement

osteopath

Nigel de Salengre & Philip Corbin

Registered Osteopaths

Church Surgery
8 Church Walk
Bideford

Tel: 01237 471110
Open 6 days a week
(Late night Monday)

BIDEFORD BAPTIST CHURCH

Mill Street, Bideford
Sunday Service 10.30am



Information, please phone:
01237 473195 (Minister)
01237 477906 (Secretary)



West Croft Junior School

Coronation Road,
Bideford, EX39 3DE

Tel: 01237 473548

Fax: 01237 423440

E-mail: admin@westcroft.devon.sch.uk

Website: www.westcroft.devon.sch.uk

At West Croft we have:

- a dedicated and effective team of staff
- a caring whole school community
- diligent, friendly and polite children
- an effective Governing Body
- Numerous extra-curricular activities

West Croft is a junior school in a residential part of town, set in attractive, extensive grounds. The rooms are well-equipped and recently re-furnished. The school is well supported by parents and the community and has a strong sporting tradition.

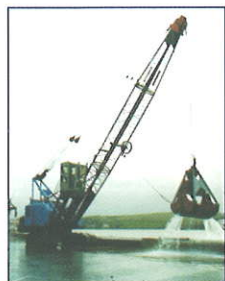
Visits to the school are warmly welcomed by us and can be arranged by contacting the School Office on the number above.

A FAMILY FAVOURITE WITH GOOD REASON

IT is Bideford's good fortune that the elements tend to smile on North Devon. You may have to contend with a bracing breeze, laced with the salt of the nearby sea, but, by English standards, it is an enviable place to live and work. And, of course, this is not lost upon the thousands of visitors who return each year to enjoy the charm and character of the town and district.

It has been said, somewhat uncharitably,

that the majority of people who come to Bideford are in their middle years... yet the tourism figures show it is a particular favourite with families, indeed all age groups. And that is, perhaps, not surprising when you consider the "season" here lasts eight months of the year.



Very much a working quay

Do not be misled by the town's Victorian facade. It is a perky little town, steeped in history, true, but fully alive to the modern needs of today's tourists.

Bideford is a working port with substantial throughput of aggregates, raw materials and clay extracts, which are delivered by road for loading onto modern, purpose-built container vessels. Alongside these container vessels there is a small but flourishing local fishing industry as well as the regular service of MS Oldenburg serving as a vital link to Lundy Island and providing pleasure cruises for tourists throughout the season.

First mention in the history books of the Quay was in 1619 when there were beaches at the river's edge. As the ship-building trade boomed, the **Quay** was developed and there are still marker stones in the pavement as a testament to that reconstruction.

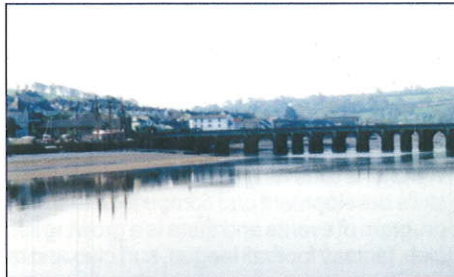
Sir Walter Raleigh is believed to have brought his first cargo of tobacco to Bideford and the town soon became one of the largest tobacco-trading centres of that period.



Fishing vessels in Bideford

Local merchants also imported vast quantities of wool during the reign of Charles I and had so great a share of the trade with Newfoundland that, in 1699, they sent out more ships than any other in England apart from London and Topsham.

Spanning the Torridge is Bideford's most notable land (or water) mark, the ancient **Long Bridge**, with its 24 arches. First built in about 1280 as a pack horse bridge, it gave up its wooden origins centuries ago and, in its current metamorphosis, is a sturdy, stone structure.



Bideford Long Bridge by day

The original wooden bridge replaced a ford and it is generally believed that this ford was the source of the town's name (by the ford).

It was in the 16th century that a genuine attempt to establish the crossing as a monument of permanence was made. It was rebuilt in stone and widened, thus taking on the shape which is now familiar today.



The Burton Art Gallery

The bridge is built at a slight angle, perhaps to give it added strength to withstand the forces of the tides.

History tells us that in the 13th century there was a chapel at each end, one to St Mary the Virgin and the other to All Saints.

The arches vary in size, perhaps because

of the fluctuating amount of money available at the time of construction. Two arches on the western side of the bridge collapsed in 1968 causing considerable disruption. Juggernauts had done their worst and the town had to rely on ferries to maintain its lifeblood.

It underlined the need for another crossing to share the load of burgeoning traffic and so, in 1987, the new **Torridge Bridge** was opened.

There is no more spectacular sight of the town than that which greets you as you drive over the new bridge.

Appealing craft and gift shops jostle for your attention in the heart of the town. Character-filled pubs and tempting eateries vie for the contents of your pocket (fish and chips is a local delicacy, while the faggots and mushy peas prove they are not just a northern preserve).

Notable moments of Bideford's history are recorded in the museum which forms part of the splendid **Burton Art Gallery** in Victoria Park. Refurbished and extended in



BIDEFORD COLLEGE

Abbotsham Road, Bideford
N Devon EX39 3AR



Science

Principal: Veronica M Matthews MA(Ed)
Tel: (01237) 477611 Fax: (01237) 428114

Email: mail@bideford.devon.sch.uk

Bideford College serves this area of North Devon and provides a caring, supportive and challenging education for students aged 11-18. Students in the main school and in the Sixth Form have a full range of curriculum opportunities leading to national qualifications.

College GCSE students achieved places in the top five nationally in English Literature, Design and Technology (Electronics & Textiles), Media Studies, Sociology and Sports Studies over the past three years. Others were placed amongst the top ranking students in A Level Chemistry and Textiles.

We offer a wide range of extra curricular activities. The sporting programme is extensive – skills development and competition to a high standard; Drama, Music and Art offer a varied program of events and there is a growing list of activities such as debating society, chess club, fantasy football league, surf club and technology projects to name just a few.

Outdoor education at the college is exceptionally strong with chances to take part in the Ten Tors, Exmoor Challenge plus Duke of Edinburgh opportunities.

We are an inclusive comprehensive College. If you would like further information please send for a prospectus or visit our website on www.bideford.devon.sch.uk

1994, it is conveniently positioned close to the riverbank and The Pill car park.

Admission is free and the gallery houses a permanent collection of paintings, porcelain and pewter bequeathed to the town by the artist Hubert Coop (1873-1953).

Touring exhibitions are staged in the gallery and about 90,000 people visited it last year. The museum above the gallery features several historic artefacts, including a section of ancient oak from the Long Bridge and collections of white clay pipes and local pottery.

Prominently displayed is a model of Bideford's Long Bridge, crafted by Mr Frank Whiting, a bridge warden and presented to the town in 1945.

The model is built to a scale of a quarter of an inch to one foot and indicates five different appearances of its structure throughout the centuries.

The art gallery was the gift to the town by Mr and Mrs Thomas Burton in memory of their daughter, Mary Meredith, and opened on October 27, 1951.

The gallery is open all the year round, including bank holidays, and closed only for Christmas and New Year and on Mondays between September and June.

In addition, there is a gift and bookshop and a restaurant which serves coffee, lunches and teas.

This is where you can find out about the **Tarka Trail**, a meandering track stretching for 180 miles along the Taw/Torridge estuary and inland - an irresistible attraction. The tranquil countryside is obviously a major reason and routes to the north, towards Barnstaple, and south towards Great Torrington, are tackled by visitors of all ages.

As you might have guessed, the trail is named after the story of Tarka the otter and, although rare, these endearing creatures are still to be seen by the patient observer.

Close to the renovated station at East-the-Water is **Chudleigh Fort**, where a striking view of the Quay can be enjoyed. The fort is the last relic of fortifications built in 1642 by James Chudleigh, an officer of the Barnstaple Garrison.

Back down in the town, **Bideford Library** offers cerebral pleasures for the visitor wishing to plunge into the pages. It is situated next to the Town Hall at the west end of the Long Bridge and has been run since 1974 by Devon County Council. Extensive alterations in 1995 considerably enlarged the reference and non-fiction room and provided disabled access.

There is a large collection of books, cassettes and CDs. The library also has a spacious children's area providing numerous activities including the "summer game" and craft workshops.



Cannon in Victoria Park stand testament to the memory of Grenville's "Revenge".

Please note that the library now offers residents and visitors computer facilities including Internet access.

Opening hours of the library range from 9.30 am to 7 pm on Monday and Thursday, 9.30 am to 5.30 pm on Tuesday and Friday. On Saturday, it is open from 9.30 am to 4 pm, but it is closed on Wednesday.

The Library also produces the free and informative "*Bideford Buzz*" Newsletter which provides details of local events and news. Further information and "historical" *Buzz* news can be found on the website: www.bidefordbuzz.org.uk

Perhaps the place to read your book is **Victoria Park**, so named to commemorate the reign of Queen Victoria and officially opened in 1912. On the entrance gates can be seen the old Bideford Seal in use more than 400 years ago.

Nine cannon, believed to be captured from the Spaniards in the Armada, surround the bandstand and neatly tended flower beds adorn the park to emphasise the peaceful surroundings.

**Cheristow Country Kitchen
Farmhouse Restaurant**



Home Produce – vegetables
and traditionally bred meat –
freshly cooked to order

Fully Licensed
Booking Essential

Cheristow
Hartland EX39 6DA

01237 441522

www.cheristow-restaurant.co.uk

LOMAS HELICOPTERS

Helicopter Charter, Weddings,
Coastal Flights, Lundy,
Aerial Photography & Filming



www.lomashelicopters.com

Tel: 01237 421054

ALWAYS WANTED:

Accident Damaged/Scrap Cars and
MOT Failures. Non-Ferrous Metals Bought

Esau's

**Motor Vehicle Dismantlers
and Salvage Specialists**

Clovelly Road, Bideford, Devon EX39 3QU

Tel: 01237 472270

Fax: 01237 424144

Website: www.autosalvagedevon.co.uk

Partners PL Cridge and A J Esau



CLOVELLY PRIMARY SCHOOL

*"Pupils are steeped in the kind of awe and wonder that
most schools have to go in search of" – Ofsted 2005*

Situated above Clovelly the school is a recently converted
Victorian building with spectacular coastal views. The school's
ethos is to develop children to the best of their ability and to
reach their fullest potential. Aiming to work together to
produce a happy, caring and stimulating environment.

Higher Clovelly, Bideford, Devon EX39 5SU

Tel: 01237 431403 • Website: www.clovelly.devon.sch.uk

Chopes

Department Store

Come to Chopes for

**QUALITY, VALUE
AND CHOICE
IN THE HEART
OF BIDEFORD**

13-15 HIGH STREET, BIDEFORD

NORTH DEVON EX39 2AE

Telephone (01237) 472091

Fax (01237) 473688

Email: sales@chopes.co.uk

Car Park Available at Rear of Store

1hr – 50p 2hrs – £1.00

FREE

*A week at
Grenville College.*

Call: 01271 472212



**COLLEGE
GRENVILLE**

A Wooded School

grenvillecollege.co.uk

If they can't learn the way we teach, we must teach the way they learn.

Within the park is a tree planted on September 1, 1944 by Lt Col F Holmes, of the US Army, as a token of friendship. It marked the good relations between the residents of Bideford and the officers, warrant officers and NCOs who were stationed in the town from 1940 to 1944.

Another commemorative feature are the rose beds dedicated to the late Princess Diana.

A Millennium Time Capsule is buried close to the park entrance and holds amongst other memorabilia from the year 2000, tapes and messages to serve as a record of the period in Bideford.

Extensive play and recreational facilities including an open-air pool for young children and a purpose-built Skateboard Park can also be enjoyed.

It is from near the park that a group of volunteers, well versed in the history of the area, will conduct tours once a week. Full details of times and days can be obtained from the Tourist Information Centre.

Among the sights you will be shown are the following:

Bridge Buildings: Built on the site of the previous Bridge Hall, the premises were opened in 1882 by Sir George Stucley and retain a sundial from the former hall dated 1692. Today they provide offices for Torridge District Council.

Municipal Building: This Elizabethan-style building was constructed in two phases, the first in 1850 when the rear section was erected. It contained the room known as the Town Hall. The section, which fronts the riverside, incorporates the

lower offices, with the Council Chamber and Mayor's Parlour above. It was opened in 1906.

St Mary's Church: This is the third church to be built on the site. Initially, there was a Saxon building, followed by a Norman church, built in 1259. That was demolished, with the exception of the tower, after it fell into disrepair and the present building was consecrated in 1865.



St Mary's Church

The font has been dated to about 1080 and, as such, is regarded as the oldest relic in the town. The tower is medieval.

The Grenville family, lords of the manor of Bideford, were associated with St Mary's Church from as early as 1200 and a memorial to Sir Thomas Grenville (who died in 1513) can be seen, bearing the shields of the family. Thomas Grenville was the grandfather of Sir Richard Grenville and great grandfather of Sir Roger Grenville who drowned when the Mary Rose sank in 1545.



**Tourist
Information**



Bideford Tourist Information Centre

- National Express Tickets
- Local Maps & Information
- Travel & Transport Information
- Accommodation Bookings
- and MUCH more

Victoria Park, The Quay, BIDEFORD
Telephone: (01237) 477676 Fax: (01237) 421853
Text Phone : (01237) 479035

TORRIDGE DISTRICT COUNCIL

e-mail: bidefordtic@torridge.gov.uk
website: www.torridge.gov.uk

Look out for our Vans on
Bideford Quay and
Around North Devon

Hocking's

North Devon's
Bronze Medal Winning
Dairy Cream Ices

Grenville Street: Formerly known as Market Street, because it led up to the market place, the street was eventually widened and renamed after the local family.



Bideford Pottery

During alterations, a vein of culm (anthracite) was exposed. Culm was mined locally from the end of the 18th century, mainly for use in lime burning, but a type of paint, known as "Bideford Black", was also made.

Silver Street: Another of Bideford's oldest streets, with interesting designs on the frontages of a number of houses - in particular a cherub and an eagle.

History recalls that John Wesley preached on the corner of Silver Street with Honestone Street on Monday, October 3, 1757.

Bridgeland Street: A fine street this, with several distinctive houses, designed about 1690 for the wealthy merchants at the height of the tobacco trade with the New World.

The "Red House" is of note, constructed with tiles to resemble brick work, thus avoiding the brick tax of the day. The Masonic Hall was the home of Rose Salterne, a character in Charles Kingsley's *Westward Ho!* and close by is Lavington Chapel, with its twin spires.

Rope Walk: Ropes up to 500 yards long were made in the street which runs off the Quay. The sailing ships which came into the town needed all they could get and posts on which the ropes were stretched stood along the whole length of the road.

Strand Collar Works were built in 1898 with a frontage of 320 feet and the premises provided work for 800 employees until it closed in 1922. Another interesting property in the roadway is Strand House, built in the 17th century. Dr Ellis Pearson, the local medical officer of

BIDEFORD PANNIER MARKET

Traditional Markets
Tuesday & Saturday
All Year Round

Butchers Row &
Market Place Shops
Open Six Days A Week



Produce, Gifts, Crafts,
Hobbies, Toys, Fish
Books, Clothing, Meat,
Lighting, Jewellery,
Plants, Refreshments
And Much More..

For A Traditional Shopping Experience



Market Place
Bideford
EX39 2DR

market@bidefordtown.co.uk
www.bidefordtown.co.uk

01237 478777



health, lived here from 1902 for about 50 years. He was the pioneer of radiology in the West Country and operated a gas powered X-ray machine at his home.



The Royal Hotel

Allhalland Street: Long before the adjacent Quay was established, Allhalland Street provided the only route from the riverside to the parish church. Sir Richard Grenville's town house is believed to have been located here - later the building became an inn and is now the property of the local authority. The street contains the town's smallest house, consisting of one room up and one down. Also nearby is the Merchant's House.

Mill Street: Famous for its newsboy figure on the top of a building where a local newspaper, The Western Express, used to be printed. The figure is called, somewhat unkindly, "The Ragged Newsboy" or "The Dirty Child", an allusion to scurrilous articles which, it is said, were published in the paper.

The Pill: This area was formerly a creek off the River Torridge and clay was unloaded here for the potteries. The land was reclaimed and Victoria Park built upon the adjacent marshland.

Between 1901 and 1917, the Bideford, Westward Ho! and Appledore Railway ran along The Pill and it was not until 1927 that the Kingsley Road was built and opened.

The Royal Hotel: Few buildings in Bideford can boast such an historically interesting and varied career as this hotel at the east end of the Long Bridge.

In 1698, the premises were built as the Colonial Buildings by a wealthy merchant, John Davie, as his private residence. In time it became the town's workhouse, prison, and now, finally, an hotel.

Within the building there are panelled rooms with moulded plaster ceilings, ornamented with foliage, figures of cherubs, festoons of fruit and flowers, serpents and birds.

There is a magnificent oak staircase which leads up to the Kingsley drawing room, where, it is said, Charles Kingsley wrote part of *Westward Ho!*

In more recent years, the building has had a wider sphere of importance. In its "Green Room" is to be found the official plaque of "Combined Operations", recording the fact that many far-reaching decisions were made there by officers during World War II. In 1949, a plaque was also placed on the building commemorating its origins as the Colonial Building.

Lavington Church:

In about 1648 a section of the local parish church left the congregation. Initially, they had no place of worship, but, in 1696, a site in Bridgeland Street was leased from the Bridge Trust and a building erected known as "The Great Meeting."



Lavington Church

Eventually, it was decided to build a new chapel and, in consequence, the present Lavington Church was built on the site.

It was opened on October 26, 1856 as a memorial to Rev Samuel Lavington, who had a long and noble ministry within the former church.

Buttgarden Street: The origin of this street's name has two possibilities - it is suggested that archers fired their arrows from butts in the area across the valley at targets on the opposite hillside or, quite simply, that the street abutted the other streets in the town.

The older buildings in the street date from about 1670. The former veterinary practice premises were purpose-built.

Many properties in the street are in the ownership of the Bridge Trust.

**Come to St Mary's Parish Church
for a warm welcome**

SUNDAY SERVICES

8am Said Communion
10am Family Communion
7pm Evensong 1st Sunday
11.15am Informal Service 1st Sunday

- Alpha ● Pre-school ● Youth Club ● Taize
- Mid-week services ● Social Events

Further information 01237 474078

9am-12noon Mon-Fri

www.bidefordstmarys.co.uk

**THE SEAGATE HOTEL AND
TWO RIVERS RESTAURANT**

The Quay, Appledore

All bedrooms en-suite with TV and tea/coffee making facilities • All rooms are secondary glazed

Good English food available every day

The restaurant serves local fish dishes

Parties welcome

Traditional Sunday Lunches

Open all year

01237 472589

www.seagatehotel.co.uk

**The Wool and
Needlecraft Shop**

49 Mill Street, Bideford EX39 2JR

Tel: 01237 473015

Opening Hours:

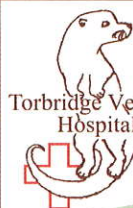
Mon to Sat 9.30am-4.45pm

Closed for lunch

1.30pm-2.00pm and

Wednesday afternoons

from 1.00pm



**A caring service for all our animals
in Bideford and Torrington**

Please contact us for all enquiries on

Tel 01237 472075

or email us

torbridge@btinternet.com



TANTONS HOTEL

New Rd., Bideford, N. Devon

Character 18th Century Quayside Hotel located in North Devon. 51 bedrooms en-suite facilities

The Riverside Restaurant offers

A La Carte menu and The Stable Bar offers a limited bar menu

We also have Conference facilities and our Kipling Suite is available for wedding parties

Tel: (01237) 473317

Website: www.tantonshotel.co.uk

Email: info@tantonshotel.co.uk

Suppliers of Quality Fresh Fish and frozen fish to restaurateurs We also sell fish at South Molton Market every Saturday and Torrington Market every Thursday

**Northam
Lights
Fishmongers**



2 The Square, Northam
Bideford, Devon EX39 1AR
Tel/Fax 01237 470470
Mobile 07968 858279

OVER 30 YEARS OF TWINNING

BIDEFORD is proud of its links with Landivisiau in Brittany. They have been twinned since 1976 and a thriving twinning association exists in the town.

The **Bideford Twinning Association** draws its members from all walks of life and the councils of both towns have played a key role in the respective visits.

There is an annual exchange of secondary school pupils and regular sporting get-togethers including soccer, skittles, golf and darts.

The pride in the association between the two towns is immediately evident when

you approach the Tourist Information Centre. There, in front of you, is a signpost pointing the way towards Landivisiau and stating that it's 179 miles (288 kilometres) as the crow flies.

The two councils have been prominent in the regular visits which take place and the Bideford Mayor is ex-officio president of the Twinning Association. The respective mayors attend the civic receptions which have become an established feature.



Landivisiau Walk

New members are welcomed and details are available on 475132.

S J & C SHERRY CONSULTANTS

- Planning Permissions & Building Design
- Environmental Engineering
- Contract Management
- Expert Witness Reports

S J Sherry BSc, CEng, MICE, MCIWEM, MCIWM.

Snows Hill, Buckland Brewer, Bideford EX39 5EJ

Tel: 01237 451416 • Fax: 01237 451546

The Tarka Train Company
20 High Street, Bideford
Devon EX39 2AA
01237 424807
www.thetarkatrainscompany.com



Guarantor Security



Established 1969
Local Knowledge • National Standards
SIA Approved Contractor – www.the-sia.org.uk/acs
Industrial • Commercial • Construction • Domestic

Manned Guarding Services including
Security Officers • Mobile Patrols
Keyholding • Alarm Response
24-hour Response

01237 472740
Fax 01237 472797

www.guarantorsecurity.co.uk
info@guarantorsecurity.co.uk

Bidna Yard, Wooda Road, Bideford EX39 1LX

Annery Dog Grooming Services



Bio Flo
Magnatherapy

Est. 1995

01237 425136



ECOFLOW plc

Independent Distributor

The company of choices that is changing lives
For Healing, Health and Energy Saving

QUAKER MEETINGS
*A spiritual path
 for our time*

are held at 17 Honestone Street, Bideford
 (near the Pannier Market)
 at 10.30 on Sunday mornings

All are welcome

Enquiries: telephone 01237 421549

BRYANT

DECORATING SPECIALISTS

30 Years Experience

Wall coverings • Paint effects
 Floor finishes • Covings • Repairs

Ask about our new imported breathable
 masonry paints that last twice as
 long as conventional ones

All work fully guaranteed

01237 473696

07770 503811



**JAMESTAN
 ENGINEERING LTD.**

Quality not Compromise

W.E.D.M. • E.D.M • JIG GRINDING
 CNC TURNING • CNC MILLING •
 CNC GRINDING

SPECIAL PURPOSE MACHINE
 MANUFACTURE, TOOLMAKING,
 PRECISION MACHINING



CERT NO. Q2893

KYNOCHS INDUSTRIAL ESTATE,
 BIDEFORD EX39 4DT

TEL: 01237 471878/9 FAX: 01237 471370

BLACK SALAMANDER • MAUI • FEDERAL

FREEBIRD

Cycle & Skate

MASSIVE ARRAY
 OF SKATE, BMX &
 SURF CLOTHING,
 SHOES, VIDEOS
 AND DVDS.



8 The Quay, Bideford Tel: 01237 - 470791

WWW.FREEBIRDONLINE.CO.UK

DIRTY DOG • SALTROCK • AIRWALK • SEXAVE • ANIMAL
 PLANET • BEZ • ALLEN WORKSHOP • BLUNT • HOOK US • FANG



THE ROYAL HOTEL



**Heritage and Luxury in
 the Heart of Bideford**

Discover the fascinating history of
 The Royal Hotel, where Sir Charles Kingsley
 wrote much of his novel 'Westward Ho!' As a
 guest of Brend Hotels, the RAC's Hotel Group
 of the Year 2005/06, you'll enjoy comfortable
 accommodation and the finest in cuisine.

For all enquiries & reservations
CALL 01237 472005

www.brendhotels.com



Rac hotel group of the year

**TORRIDGE
 DISTRICT
 COUNCIL**



**RIVERBANK HOUSE
 BIDEFORD
 DEVON
 EX39 2QG**

TEL: (01237) 428700
 FAX: (01237) 478849

WEBSITE:

www.torrige.gov.uk

BIDEFORD RAILWAY

After a gap of 39 years, it is now possible to take a train ride from Bideford's Railway Station. During the summer of 2004, the Bideford & Instow Railway Group commenced diesel hauled passenger rides in a Brake Van over a short section of re-laid track.

The railway arrived in the town in 1855 and over the years it was possible to catch direct trains from Bideford to London Waterloo. The line was also the route of the famous "Atlantic Coast Express." Sadly the popularity of the car took over and in 1965 the railway between Bideford and Torrington was the victim of the Beeching Axe. Although the route survived as a freight line until 1982, the railway was dismantled in the mid 1980s and converted to the Tarka Trail cycleway/footpath.

It was at this time that the Bideford Railway Group was formed to restore the town's Station and over the next 15 years the Bideford Railway Heritage Centre was formed, the Signal Box rebuilt on its

original site and rails re-laid throughout the Station. Historic rolling stock was brought into the site and 2004 saw the commencement of passenger rides from the Station.



The renovated signal box

The Heritage Centre attracts thousands of people who can visit the Museum showing photos of the former railway and artefacts from the line. The long term aim of the Group is to re-instate the railway back to Barnstaple alongside the Tarka Trail. For further details, visit the Group's website on www.bidefordrail.co.uk

CHARLES KINGSLEY: A FAMOUS SON

VICTORIAN novelist, Charles Kingsley, brought Bideford to the attention of a wider world when he eloquently described it as "the little white town... which slopes upwards from its broad tide river." That affectionate phrase has endured for more than 140 years since Kingsley penned it while writing his famous work, *Westward Ho!*



Kingsley's statue

Indeed, it is now etched proudly on the signs which welcome you to this friendly North Devon town and no matter where you go within its narrow streets, bright, white cottages and shops pay homage to the writer's words.

Even Kingsley's statue is white. He looks out, with an august air, over the River Torridge from the edge of the Quay. His quill is missing, but the marble figure, standing over eight feet high, is a fitting memorial to a man who lived in Bideford in 1854 and is said to have written part of *Westward Ho!* at the imposing Royal Hotel across the water.

The statue was unveiled on February 7, 1906, the same day as the opening of the town's Free Library and the extension of the Municipal Building. Kingsley was born in 1819 at Holne, on the edge of Dartmoor and died at Eversley in 1875. Since then, Bideford has changed, but only gradually and the novelist would still recognise his "little white town" if he were able to see it now.

CHARTERS AND ARMS

BIDEFORD has several charters and arms to its name, on view in the Town Hall.

Arms of Earl of Bath:

Sir Bevil Grenville, the grandson of Sir Richard, fought in the English Civil War (1642 - 1652). He died as a result of injuries sustained in the Battle of Lansdown in 1643 and, in recognition of his service, Charles I bestowed upon his son, John, the Earldom of Bath in 1661. This title became extinct in 1711. These arms were restored by Cllr D Vickers, a former mayor of Bideford.



Royal Charter, 1573:

Obtained for Bideford by Sir Richard Grenville from Queen Elizabeth I, creating Bideford as a borough with the power to elect a mayor, alderman and burgesses. Also permitted Bideford to hold a weekly market and annual fairs.

Royal Charter, 1609:

Granted to Bideford by James I on his accession to the throne - increasing the numbers of aldermen and burgesses. It further granted a Town Seal and the power to make bye-laws.

Royal Pardon, 1643:

Granted to Bideford by Charles I on the surrender of the town of Bideford to him in the Civil War on August 28, 1643.

Framed Coat of Arms Over Dais:

Dates from George II (1742) – a gift to the Corporation in 1936 by Mrs Milsom in memory of her husband who had been a rating officer for the borough.

Plaque of Royal Arms (front of balcony):

Denoting the authority to hold courts within the Town Hall.

Housing Award:

Granted in 1985 for the building of Ethelwynne Brown Close, a sheltered housing complex on the east bank of the River Torridge and named after a former mayor of Bideford, Mrs Ethelwynne Brown.

Classic Curtains

- *Curtains, Valances and Tiebacks
- *Cushions, Bedding and Accessories
- *Alterations, Repairs and Re-lining
- *Some Upholstery work also undertaken
- *Other Sewing Jobs Considered

TEL Julie on 01237 479249
or mobile 07968505373

5% discount on production of this advert

FOR ALL YOUR CARPET AND UPHOLSTERY CLEANING

ChemDry® Master Care

- FAST DRYING ■ SPOT CLEANING
- GOOD AND PROMPT SERVICE

FOR A FREE QUOTATION CALL Mark (Bideford) 01237 431061

COVERING ALL NORTH DEVON
INDEPENDANTLY OWNED AND OPERATED

A PERFECT TOURING BASE FOR ALL OF NORTH DEVON

BIDEFORD is ideally positioned for touring North Devon. Around the town, within easy driving distance, lie numerous places of interest.

Opened in July, 2000, **Atlantic Village**, located at Clovelly Road (off the A39 heading towards Hartland and Clovelly) now boasts some 80,000 sq. ft. of high quality factory outlet shopping set within a complex, offering extensive recreational and leisure activities for children. Extensive parking, a wider choice of modern retail outlets and refreshments, this multi-million pound investment is a must visit attraction to the region.

For families, **The Big Sheep**, a couple of minutes west of the new Torridge Bridge on the A39, is a "must" with its

sheep racing, sheep dog trials and woolcraft centre.



The Tourist Information Centre

Slightly farther afield, at Morwenstow, in the direction of Bude, **Killarney Springs** offers tractor rides, bumper boats, an indoor play village and nature trail.

If it's scenic charm you seek, picturesque **Clovelly**, clinging to the cliffside, will take

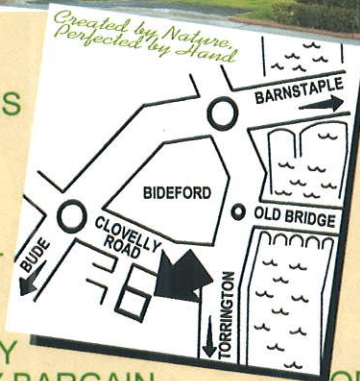


QUALITY PINE FURNITURE AT FACTORY PRICES

THE LARGEST SHOWROOM IN THE SOUTH

COME AND VISIT "IT'S GREAT"

AND COME AWAY WITH A QUALITY BARGAIN



**IN SOLID OAK
IN HARDWOOD
IN PAINTED PINE**

A FANTASTIC CHOICE

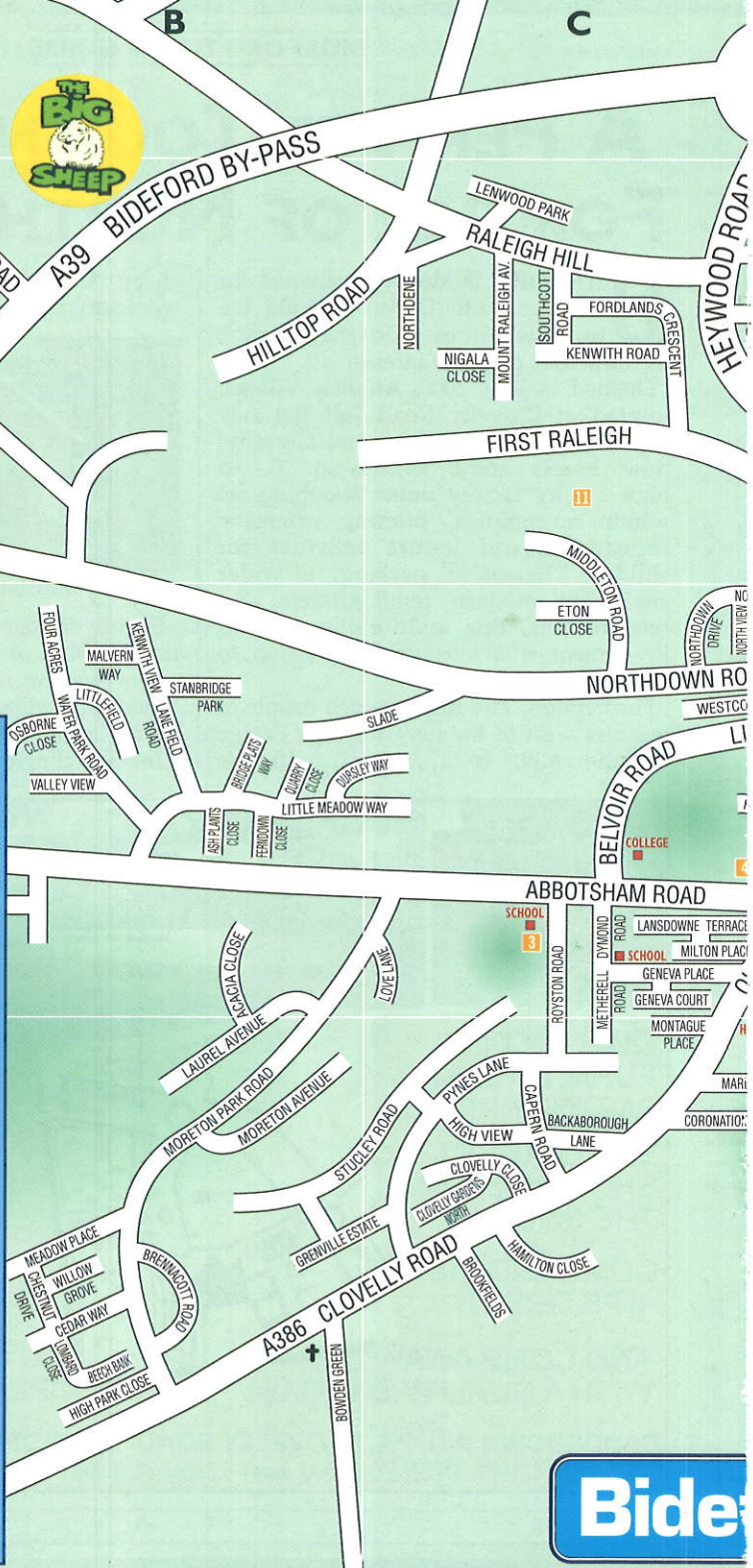
AT A FANTASTIC PRICE

OPEN 7 DAYS A WEEK

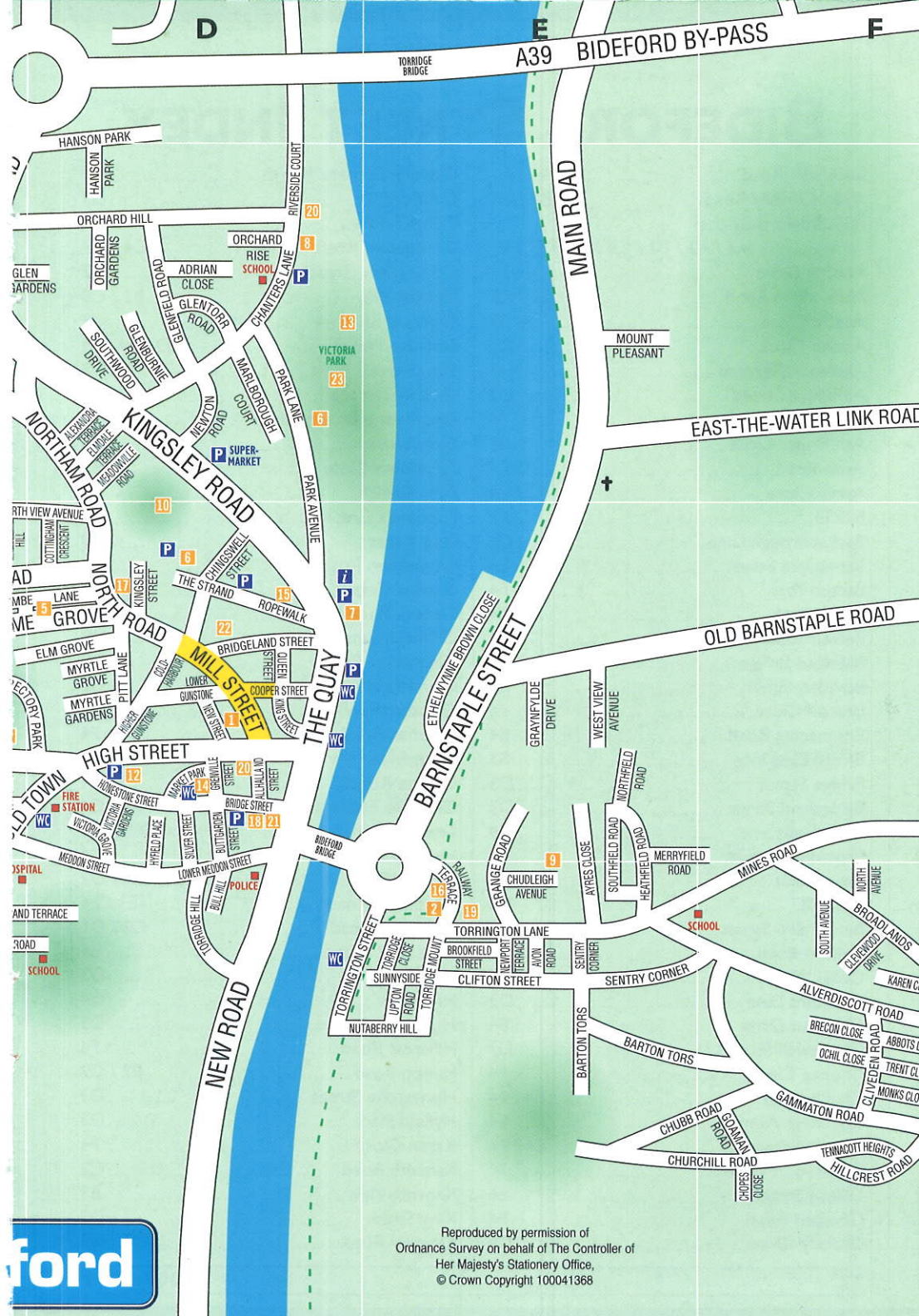
**CADSDOWN IND. PK. CLOVELLY ROAD BIDEFORD DEVON EX39 3DX
TEL.(01237) 421900 OPEN MON - SAT 9am - 5.30pm SUN 10am - 4pm www.devonshirepine.co.uk**



- 1 Baptist Church
- 2 Bethel Church (Evangelical)
- 3 Bideford Community College and Theatre
- 4 Bideford District Hospital
- 5 Bideford Town Mission
- 6 Bowling Clubs
- 7 Burton Art Gallery and Museum
- 8 Cattle Markets
- 9 Chudleigh Fort
- 10 Football Ground
- 11 Kenwith Valley Nature Reserve
- 12 Methodist Church
- 13 Rugby Ground
- 14 Pannier Market
- 15 Post Office
- 16 Railway Station Museum and Tarka Information Centre
- 17 Roman Catholic Church
- 18 St Mary's Parish Church
- 19 St Peter's Church
- 20 Torridge District Council Offices
- 21 Town Hall and Library
- 22 United Reformed Church
- 23 Victoria Park
- WC Toilets
- P Parking
- Tarka Trail
- Pedestrianised Road



Bide



Reproduced by permission of
Ordnance Survey on behalf of The Controller of
Her Majesty's Stationery Office,
© Crown Copyright 100041368

BIDEFORD STREET INDEX

Buckleigh Road	A1	Clovelly Gardens North	C4
A386 Clovelly Road	B4 / C4	Coldharbour	D3
A39 Bideford By-pass	A3 / A2 / B2 / C1 / D1 / E1 / F1	Cooper Street	D3
Abbots Drive	F4	Coronation Road	C4 / D4
Abbotsham Road	A3 / B3 / C3	Cottingham Crescent	D3
Acacia Close	B3	Dursley Way	B3 / C3
Adrian Close	D2	Dymond Road	C3
Alexandra Terrace	D2	East-the-Water	E3 / E4 / F4
Allhalland Street	D3	Elm Grove	D3
Alverdiscott Road	F4	Elmdale Terrace	D2
Ash Plants Close	B3	Ethelwynne Brown Close	E3
Avon Road	E4	Eton Close	C3
Ayres Close	E3 / E4	Ferndown Close	B3
B3233	E1	First Raleigh	C2
Backaborough Lane	C4	Fordlands Crescent	C2
Barnstaple Street	E3	Four Acres	B3
Barton Tors	E4 / F4	Gammaton Road	F4
Beech Bank	B4	Geneva Court	C3
Belvoir Road	C3	Geneva Place	C3
Bideford Bridge	D3	Glen Gardens	C2 / D2
Bowden Green	B4	Glenburnie Road	D2
Brecon Close	F4	Glenfield Road	D2
Brennacott Road	B4	Glentorr Road	D2
Bridge Plats Way	B3	Goaman Road	F4
Bridge Street	D3	Graynfyld Drive	E3
Bridgeland Street	D3	Grange Road	E3 / E4
Broadlands	F4	Grenville Estate	B4 / C4
Brookfield Street	E4	Grenville Street	D3
Brookfields	C4	Hamilton Close	C4
Bull Hill	D4	Hanson Park	D1 / D2
Buttgarden Street	D3	Heathfield Road	E3 / E4
Capern Road	C4	Heywood Road	C2 / D1
Cedar Way	B4	High Park Close	B4
Chanters Lane	D2	High Street	D3
Chestnut Drive	B4	High View	C4
Chingswell Street	D3	Higher Gunstone	D3
Chopes Close	F4	Hillcrest Road	F4
Chubb Road	E4 / F4	Hilltop Road	B2 / C2
Chudleigh Avenue	E4	Honestone Street	D3
Churchill Road	E4 / F4	Hyfield Place	D3
Clewood Drive	F4	Karen Close	F4
Clifton Street	E4	Kenwith Road	C2
Cliveden Road	F4	Kenwith View	B3
Clovelly Close	C4	King Street	D3
		Kingsley Road	D2 / D3

BIDEFORD TOWN GUIDE

Kingsley Street.....	D3	North View Avenue.....	C3 / D3
Lane Field Road.....	B3	Nutaberry Hill.....	D4 / E4
Lansdowne Terrace.....	C3	Ochil Close.....	F4
Laurel Avenue.....	B3 / B4	Old Barnstaple Road.....	E3 / F3
Lenwood Park.....	C2	Old Town.....	C3 / C4 / D3
Lime Grove.....	C3 / D3	Orchard Gardens.....	D2
Littlefield.....	B3	Orchard Hill.....	D2
Little Meadow Way.....	B3 / C3	Orchard Rise.....	D2
Lombard Close.....	B4	Osborne Close.....	B3
Love Lane.....	C3	Park Avenue.....	D2 / D3
Lower Gunstone.....	D3	Park Lane.....	D2
Lower Meddon Street.....	D3 / D4	Pitt Lane.....	D3
Main Road.....	E1 / E2	Pynes Lane.....	C4
Malvern Way.....	B3	Quarry Close.....	B3
Market Park.....	D3	Queen Street.....	D3
Marland Terrace.....	C4 / D4	Railway Terrace.....	E4
Marlborough Court.....	D2	Raleigh Hill.....	B1 / C2
Meadow Place.....	B4	Rectory Park.....	C3 / D3
Meadowville Road.....	D2	Ropewalk.....	D3
Meddon Street.....	D3 / D4	Royston Road.....	C3 / C4
Merryfield Road.....	E3	Sentry Corner.....	E4
Metherell Road.....	C3 / C4	Silver Street.....	D3
Middleton Road.....	C2 / C3	Slade.....	B3 / C3
Mill Street.....	D3	South Avenue.....	F4
Milton Place.....	C3	Southcott Road.....	C2
Mines Road.....	F3 / F4	Southfield Road.....	E3 / E4
Monks Close.....	F4	Southwood Drive.....	D2
Montague Place.....	C4	Stanbridge Park.....	B3
Moreton Avenue.....	B4	Stucley Road.....	B4 / C4
Moreton Park Road.....	B3 / B4	Sunnyside.....	E4
Mount Pleasant.....	E2	Tennacott Heights.....	F4
Mount Raleigh Avenue.....	C2	The Quay.....	D3
Myrtle Gardens.....	D3	The Strand.....	D3
Myrtle Grove.....	D3	Torrige Bridge.....	E1
New Road.....	D4	Torrige Close.....	E4
New Street.....	D3	Torrige Hill.....	D4
Newport Terrace.....	E4	Torrige Mount.....	E4
Newton Road.....	D2	Torrington Lane.....	E4
Nigala Close.....	C2	Torrington Street.....	D4 / E4
North Avenue.....	F4	Trent Close.....	F4
North Road.....	D3	Upton Road.....	E4
North View Hill.....	C3	Valley View.....	B3
Northam Road.....	D2 / D3	Victoria Gardens.....	D3
Northdene.....	C2	Victoria Grove.....	D3
Northdown Drive.....	C3	Water Park Road.....	B3
Northdown Road.....	A2 / B2 / B3 / C3 / D3	West View Avenue.....	E3
Northfield Road.....	E3	Willow Grove.....	B4

MOLLANDS GARAGE

QUAY LANE, INSTOW

- ✓ MOT STATION
- ✓ SERVICING
- ✓ REPAIRS
- ✓ WELDING

 **TEL: 01271 860307** 

"Corner House"

Warm & Friendly Family Run Guesthouse
in the Centre of Bideford

Open all year

Family rooms available

Proprietors

Chris & Sally Stone

Tel: 01237 473722

"ACCOMMODATION"

The Strand, Bideford, North Devon EX39 2ND

Email: ccornerhouse@aol.com

www.cornerhouseguesthouse.co.uk



GOODLIVING CHRISTIAN BOOKSHOP

20b Mill Street,
BIDEFORD, EX39 2JR

Open Monday to Saturday
9am to 5pm

Early closing 1pm
Wednesday & Saturday

Phone: 01237 422213

Fax: 01237 424189

Email:

goodliving@btconnect.com

- Bibles & Books
- CDs & Cassettes
- Greeting Cards
- Gifts
- Videos & DVDs
- Software
- Sunday School & Youth Resources
- Bulk Orders from Churches Welcomed

PASSMORE WRIGHT & COMPANY

Chartered Surveyors

Homebuyers Surveys & Valuations ~

Building Surveys ~ Valuations for all

Purposes ~ Rent Reviews & Lease

Renewals ~ Compensation Claims

Property/Estate Management

23 The Quay, Bideford, North Devon, EX39 2EZ



Tel (01237) 473184



RICS

Also at Bude 01288 359591

surveyors@passwright.co.uk



FOUR SEASONS

GARDEN SERVICES

THE COMPLETE
LANDSCAPE AND
GARDEN MAINTENANCE SERVICE



**FULLY
INSURED**

**FREE
ESTIMATES**

01237 474331
07768 644530

www.4seasons-gardens.co.uk

2 Daneshay, Northam, Bideford, Devon EX39 1DG

Lakenham Residential Care Home

Breathtaking Sea Views

Home Cooked Food –
Special Diets Catered for

Fully Trained NVQ Staff
Day & Night

Day and Respite Care –
Day Social Activities

En-Suite Rooms with
TV & Telephone

Passenger Lift to all floors

A beautiful Chapel
offers peace and quiet

Tel : 01237-473847 Lakenham Hill
Northam Nr. Bideford Devon EX39 1JJ

your breath away... well, at least perhaps make you puff a little as you negotiate the steep cobbled streets.



The "Oldenburg"

The Fisherman's Cottage, where you will learn what it was like to be a fisherman in the last century, and the Kingsley Exhibition, which relates the life story of Charles Kingsley (he lived in Clovelly when his father was rector at the church), are enlightening interludes on your stroll down to the quaint 14th century quay.

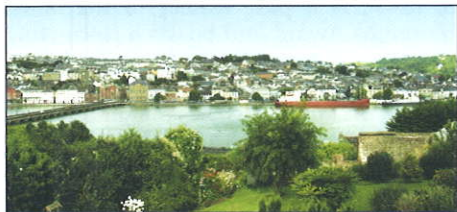
Rosemoor Garden, beautifully developed and enhanced by the Royal Horticultural Society, near Great Torrington, is a riot of colour in the spring and summer. And the Gnome Reserve and wild flower garden, near the Saxon village of Bradworthy, brings both foliage and fun together as you mingle with the pixies and plants.

Kenwith Valley Nature Reserve, on the outskirts of the town, is a popular haunt for those who love the solitude of lakes and trees. It was established in the 1980s after the introduction of a local flood prevention scheme and now flourishes with birdlife and nature trails.

Shopaholics would not, indeed could not, go home happy without a lingering visit to the **Dartington Crystal** site at Great Torrington. This is one of the area's leading tourist attractions and is open throughout the year.

Apart from the factory shop, the giftware shop and the Tarka Mill (a treasure store of country clothing and knitwear), you can tour the factory where the famous crystal is made - children are free - and enjoy a bite to eat in the pavilion restaurant.

Pottery, how it's made and pieces to buy, is the reason why so many people call in at Brannams, between Bideford and Barnstaple. Terracotta ware of all shapes and sizes are produced at the pottery - and you can even have a go yourself.



A view over the Torridge

More adventurous souls can turn to the sea for enjoyment... on a trip to nearby **Lundy Island** where the seals play and puffins watch over the old pirate haunts in the only marine nature reserve in Great Britain.

The MS Oldenburg leaves Bideford quay several days a week and takes just over two hours to reach this beautiful island without equal.



F.R. WAY

of

BIDEFORD

Est 1908

QUALITY HOUSE FURNISHER

STOCKISTS OF:-

Fine Furniture • Beds • Carpets • Rugs • Clocks • Mirrors • Lamps • Giftware

11 Bridgeland Street, Bideford, Devon EX39 2PZ. Tel/Fax: 01237 472171

Web: www.frway.co.uk Email: enquiries@frway.co.uk



Or, of course, there is sea fishing from **Appledore** and **Clovelly** up the coast or angling - for game or coarse fish - on the Torridge and Taw and various ponds and lakes and reservoirs in the immediate area.



Bideford Dragon Boat Race

The **North Devon Maritime Museum**, in Odun Road, Appledore, a mile or two out of town, is a past winner of the Small Museums Award and boasts a fascinating collection of seafaring memorabilia.

On the other side of the estuary, at Instow, the beach stretches for almost as far as the eye can see and a look back, past the restored railway signal box, is rewarded

with a superb view across the water towards the new Torridge Bridge.

Westward Ho! (did you know it became known as that only after Charles Kingsley's book?) is another haven for beach lovers - and golfers, too, who can enjoy a relaxing round at the Royal North Devon Course.

And so the list of localities to explore goes on... and should you ever tire of wandering, a delicious Devon cream tea is never far away.

If this brief canter around the delights of the coast and countryside has whetted your appetite, remember it is but a mere introduction to the wealth of diverse attractions which form the rich tapestry of North Devon, a magical corner of England with a welcome as warm as its climate.

** Full details of the above sights and sites are available at the **Tourist Information Centre**, in Kingsley Road, near to Victoria Park where staff will be only too pleased to suggest even more ideas of things to do and places to go.*

Burton Art Gallery Built in 1951 by Thomas Burton, in memory of his

QUALITY
COUNTS
NDNA ACCREDITED



QUALITY
COUNTS
NDNA ACCREDITED

**NDNA Quality Approved Full Day Care Nursery for
Children aged three months to five years**

Open from 8am to 5.30pm

Registered for Grant Funding

Employer voucher schemes welcome

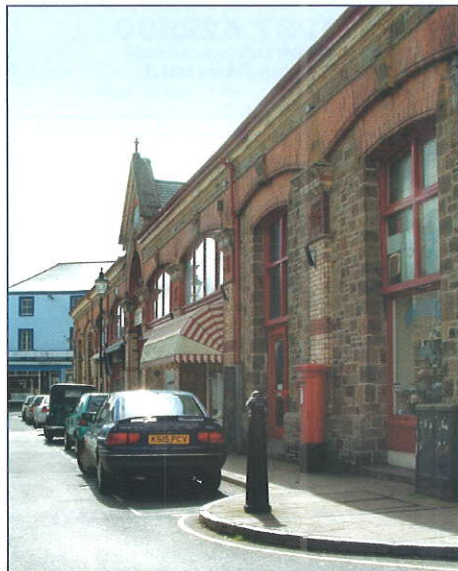
Telephone: 01237 422641

daughter Mary, a talented artist, the Gallery has hosted a variety of exhibitions every year ever since. The permanent



The Burton Art Gallery and Museum

collection of paintings was donated at the time of opening by Hubert Coop, a well established artist, and this has been added to over the years with contemporary works of art. In 1994, the whole building



The town's famed Pannier Market

was refurbished and extended from its original two, to four exhibition areas, and approximately fifteen exhibitions are held each year, showing a variety of media, including ceramics, engravings, oil and watercolour paintings, sculpture, photography, children's art, national touring exhibitions and work by local

groups. The Craft Gallery features unique examples of work by specialists in wood craft, textiles, ceramics, jewellery, prints, metalwork and furniture. The new Bideford Museum, now housed in new, well lit display cases, illustrates Bideford's historical past, the characters who have made it famous, such as Sir Richard Grenville, Edward Capern, the Postman Poet, and John Strange, who worked to help Plague victims, and the



The long bridge at night

Bideford Witches. Artefacts on display include Napoleonic bone ship models, and the scale replica of Bideford's Long Bridge. The North Devon on Disk project shows visitors photographs of old Bideford on a touch-screen, and Bideford Archive case has its own regular changing displays.

The Gallery is light and spacious, and visitors enjoy refreshments in the Coffee Shop overlooking the Park. There is no admission fee, and visitors can find a relaxed atmosphere and much of interest for all age groups.

Brocklands Adventure Park: The largest all weather attraction in North Cornwall is 16 miles from Bideford and includes Steam Train, Supa Karts, Bumper Boats, Pony Rides, Smarties Mega Tube Slide, Interactive Wildlife Centre, Ball Pools and Bouncy Castles.

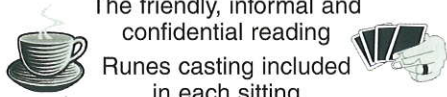
The only attraction in Cornwall to include the first go FREE on Supa Karts and Archery and unlimited goes on the Bumper Boats, with free parking and 200 seater Restaurant.

Group rates are available and at Christmas Santa visits.

Information sheets from mid-August.

Brock Bowl, a new 10 pin bowling centre was opened in December 2002. Open from 10.30am until late.

TEALEAVES AND TAROT

The friendly, informal and confidential reading

 Runes casting included in each sitting

Call Sylvia 01237 472816
www.tealeavesandtarot.com

SACRED HEART CATHOLIC CHURCH

North Road, Bideford, North Devon

Phone 01237 472519

Parish Priest: Fr. T. O'Donovan

The Presbytery, North Rd., Bideford

MASSES

BIDEFORD: Saturday 6.30pm, Sunday 11am

TORRINGTON (The Holy family),

Gas Lane: Sunday 9.15am

HARTLAND (Our Lady & St Nectan):

Sunday 5.00pm

NORTH DEVON FAMILY MEDIATION SERVICE

If you can't go back, move forward.



Separation/Divorce
 Child Matters/Finance
 Free 1st Appointment



01271 321888

www.northdevonfamilymediationservice.co.uk

The Castle Centre
 Castle Street, Barnstaple



CARE JUST WHEN YOU NEED IT

We can assist with a wide range of practical support services including:

- Shopping, collecting pensions & prescriptions
- Help with the preparation of meals
- Personal care including help with bathing, washing, dressing etc
- Housework & laundry support
- Support for existing Carers, who may not otherwise get a break

01237 422500

Carewatch North Devon & Torridge
 24 The Quay, Bideford EX39 2EZ

Registered with The Commission for Social Care Inspection
 Service Providers for Devon Social Services

CLOVELLY

Just west of Bideford



Visitors say:-
 "unique,"
 "spectacular,"
 "magical,"

"a treasure,"
 "the donkeys"
 "lots to see,"
 "not to be missed!"



So come and see for yourself!

VISITOR CENTRE
01237 431781
www.clovelly.co.uk

Merry Harriers Nursery

A
D

WOOLSERY, DEVON

Tel 01237 431 611

H

Open 10 - 5 daily including Bank Holidays

A

*Fine selection of bedding
 Perennials, Grasses, Herbs,
 Shrubs, Trees*

T

T

Undercover Sales Area

E

Local Crafts – Book Shop

R

Visit

R

Mad Hatters Restaurant

E

Open daily

S

Morning Coffee – Lunches

T

Cream Teas

A

Fri & Sat Evenings

U

Sunday lunches – 3 course £9.50

R

Booking essential

A

An ideal venue for group outings

N

Directions 1/2 mile from the A39
 follow signs at Bucks Cross

SPORTS FOR ALL

SPORT in all its forms – from pub pastimes and rugby to the Bideford Association Football Club – thrives in Bideford and its environs.

The affinity the area has with water is well illustrated by the Bideford Amateur Rowing Club, the Bideford Canoe Club and the North Devon Yacht Club, all offer tremendous facilities.

Sea fishing is available from Bideford, Appledore, Clovelly and farther afield at Ilfracombe, with plaice, mackerel, bass and conger among the likely catches.

The rivers Torridge and Taw each have a character of their own for anglers. The Torridge offers up its rich treasures of salmon and trout in its middle and lower reaches. The Taw, too, is noted for its salmon and is also a haven for the wild native brown trout. Staying with the watery theme, the Taw and Torridge Diving Club and Torridgeside Amateur

Swimming Club never lack for support.

The Torridge Pool is situated between Bideford and Appledore and is open seven days a week, throughout the year.

Badminton, table tennis, rugby, athletics, even a national BMX club, are just a few more of the wealth of activities available.

But, perhaps the sport which attracts one of the largest number of visitors is golf. North Devon, and particularly the Bideford area, is noted for its courses - and there are plenty from which to choose.

The Royal North Devon, at Westward Ho!, is the oldest links course in England and the "olde worlde" atmosphere pervades its clubhouse. Libbaton is the home of North Devon School of Golf with all ability coaching and floodlit facilities.

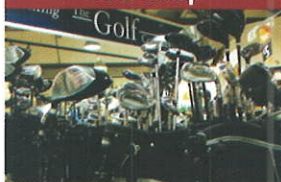
Other courses, such as Bude & North Cornwall, Holsworthy and Torrington are all within about 30 minutes' drive from Bideford.

The Edinburgh Woollen Mill



at The Quayside - Atlantic Village

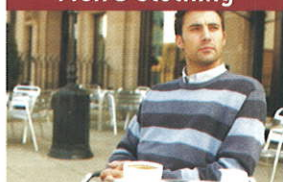
Golf Shop



Ladies Clothing



Men's Clothing



Kids Department



Quayside Larder



Accessories



The Edinburgh Woollen Mill, Quayside, Atlantic Village, Bideford, Tel: 01237 473406

HISTORIC PANNIER MARKET

THE historic covered Pannier Market, trades on Tuesdays and Saturdays, whilst Butchers' Row is open Monday to Saturday and is a favourite with tourists and residents alike. It was built in 1884 at a cost of £4,200 to house a fish market, butchery stalls and corn exchange.

The Mayor, G W Vincent, performed the opening ceremony which was followed by a public dinner when almost 200 people sat down. The day ended with a promenade concert and later that week about 2,000 children gathered at the market for a tea party.

You find the Pannier Market by walking up the High Street and taking a left turn into Grenville Street. The building stands fair and square ahead of you.

It is called the Pannier Market after the wicker baskets, or panniers, in which farmers' wives carried their wares and a market has been held in Bideford since the granting of the Charter of Incorporation in 1573.

Nowadays, the butchers are joined by all manner of tradespeople. At other times,

flower shows, boxing and other events are held within the market's stone walls.

The Pannier Market has been substantially refurbished as a result of funding made available by the Town Council. Commencing



Inside "Butchers Row"

in 1993 an ongoing programme has seen the introduction of heating, improved lighting and extensive renovation to the fabric of the entire building.

This work has been carried out by craftsmen who have maintained both the character and history of the building, whilst ensuring that it affords the visitor every comfort and convenience.



A well-stocked and bustling main hall

THE QUAY FOUNTAIN

IF you walk along the new enhanced quay at high-tide you will be able to witness 24 arches of water which reflect the 24 arches of Bideford's Historic Bridge cascading from the quayside back into the



Fountain at night

Torridge. The water jets rise up to 15 metres above the quayside and project approximately 30 metres into the river at various heights and distances. Up to 136 litres of seawater are pumped through the system per second generating a powerful

and impressive display. The entire operation is managed via a computerised controller within the quay building. If the wind conditions are unsuitable, or if a ship is expected the fountain may be switched off, but otherwise operates at high tide each day. An interpretation board has been mounted near the fountains, describing when they operate and what to expect. A number of resin blocks have also been cast into the quay wall. These contain artefacts of specific interest to Bideford. The quay fountain was first proposed at a meeting of the Town Council in 2001 in order to commemorate the Golden Jubilee of Her Majesty Queen Elizabeth II. The fountain was funded by Bideford Town Council, Bideford Bridge Trust and Torridge District Council, with the latter also procuring the project. The fountain was opened as part of the official opening of the Bideford Quay enhancements on 1 June 2006 by the Right Honourable Lord Burnett.

TOWN YOUTH COUNCIL

BIDEFORD Town Youth Council was officially formed at its inaugural meeting on 30 November 2005. This followed a formal election process for those candidates who lived or were educated in Bideford between the ages of 13–18 with each candidate putting forward their campaign in the form of a speech at a hustings held in the Pannier Market. The idea was to shadow the current Town Council and, following the election on 21 November 2005, 16 youth councillors were elected to serve on the Youth Council.

During the run up to the elections a number of workshops were held so that candidates could get together, and with assistance from a number of organisations, were given guidance on how the youth council would work and what was expected of them.

In all, 10 meetings were held during the year in school term only. The formulation

of the Youth Council has been very successful as it has representation on a number of committees and groups such as



Bideford Town Youth Council.

Bideford College: Andrew Beauchamp, Leigh Casemore, Katie Cloak (chairman), Shane Farrant, Jess Ford, Corrine Hagley, Liz Hancox, James Martin, Amy Pike.
Edgehill College: Toby Collins, Dorothy Sze, Tim Ti.
Grenville College: Maryrose Ashton, Lauren (Kandy) Kandasamy, Anna Woolcott.
Resident: Karen Raymont.

THE Musician's Store, Bideford

ToneZone Music

Everything You Need To Rock!



- Instruments
- Accessories
- Books
- Sheet Music
- Repairs
- Servicing
- Tuition

Ade & Barbara
 5 Grenville Street
 Bideford EX39 2EA
01237 421166
 0791 808 4913/4
 info@tonezonemusic.co.uk



www.tonezonemusic.co.uk

Time For a New Town Guide or Town Map?

Town, Parish and Visitor Guides and Maps are welcomed by residents, tourists and newcomers to your community

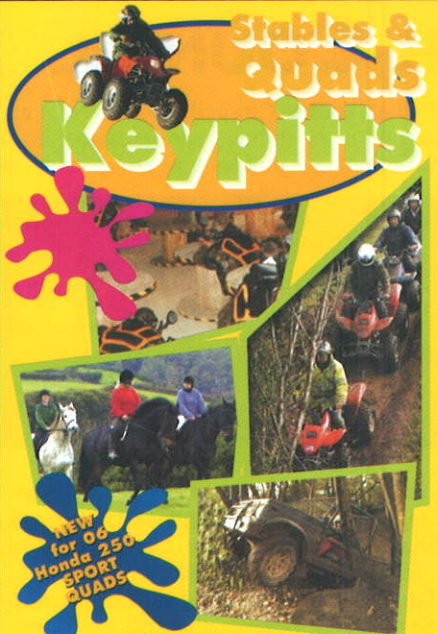
Professional and informative publications that boost business for local traders



For further details and free samples contact Paul Smith at Plus Publishing Services, PO Box 276, Ashford, Kent TN24 8GN
 Tel: 01233 643574 • Email: plus@public62.freeserve.co.uk

Stables & Quads

Keypitts



NEW for 06 Honda 250 SPORT QUADS

Ilfracombe, Devon
 Tel: 01271 862247 • www.keypitts.com

ST. JOHN'S

GARDEN CENTRE & NURSERIES

- Quality Indoor & Outdoor Plants
- Superior Sheds & Garden Buildings
- Jungle Conservatory Restaurant
- Quality Garden & Conservatory Furniture
- Visit Jungleland - It's Free!
- Pet, Bird & Wildlife Care Products
- Array of Leisure & Gift Ideas
- Wealth of Knowledge & Experience



COME & DISCOVER ST. JOHN'S NEXT TO TESCO, BARNSTAPLE
 St. John's Lane, Barnstaple Tel: 01271 343884
 www.stjohnsgardencentre.co.uk

the Bideford Regeneration Initiative, Leader+ (Youth Grants Panel), Underage Drinking Working Group, East-the-Water Youth Committee, Public Transport Working Group, Sports Forum, Neighbourhood Wardens Scheme and a Y-SMART project. There are also strong connections with Bideford Town Council and Torridge District Council and has representation on their Liaison Committee.

The Youth Council managed to attract funding grants to allow its members to go away on a residential team building

weekend and run a major project which this year was a youth music concert. It has also influenced additional safety measures in the Skate Park, lighting and security in Victoria Park and getting a new basketball court put back into the town.

Overall, the first year has been a huge learning experience for all the youth councillors and those people who mentor them. It is hoped that the Youth Council will make an even bigger impact and a difference to the young people of Bideford in the years ahead.

GENERAL INFORMATION

HARBOUR AUTHORITY

Torrige District Council 428700

POLICE

New Road, Bideford.
Central Information 08452 777444

TORRIDGE VOLUNTARY SERVICE

Bridgeland Street, Bideford 425554

TOURIST INFORMATION CENTRE

Victoria Park,
Bideford 421853 or 477676

CHAMBER OF COMMERCE

Bideford Chapter 0870 8031246
info@harbourleisure.co.uk

PUBLIC LIBRARIES

New Road, Bideford 476075

CITIZENS ADVICE BUREAU

28a Bridgeland Street, Bideford 473161

POST OFFICE

Bideford Post Office,
The Quay, Bideford (mornings) 472318

HOSPITALS

Bideford Hospital,
Abbotsham Road, Bideford 420200

North Devon Hospital,
Raleigh Park, Barnstaple (01271) 322577



The fishing tradition persists

CINEMAS

Central Cinema,
Boutport Street, Barnstaple (01271) 370022

THEATRES

The Landmark Theatre,
The Seafront, Ilfracombe (01271) 865655

The Queen's Theatre,
Boutport Street, Barnstaple (01271) 324242

The Plough Arts Centre,
9 Fore Street, Torrington (01805) 622552

BIDEFORD TOWN GUIDE

HALLS

Bideford Pannier Market Hall,
Market Place, Bideford 478777

Pollyfield Centre,
Avon Road, Bideford East 478734



Bideford Quay at night

CHURCHES

**Bideford Baptist
Church Centre** 471893

Bideford Methodist Church 472352

Lavington (United Reformed) Church
424255

**St Mary's Parish Church
(Church of England)** 474078

**The Sacred Heart
(Roman Catholic)** 472519

DOCTORS

Bideford Medical Centre,
Abbotsham Road, Bideford 476363

Wooda Surgery,
Clarence Wharf, Bideford East 471071

Northam Surgery,
Bayview Road, Northam, Bideford 474994

DENTISTS

The Quay Dental Practice,
NatWest Bank Chambers,
The Quay, Bideford 473638

Understanding people



Lexcel

- Conveyancing
- Business
- Accidents
- Divorce
- Employment
- Crime
- Children
- Wills & Estates
- Tax & Trust
- Debts
- Disputes
- Tenancies
- Farming

**Brewer
Harding
& Rowe**
solicitors

Exeter 01392 496100, 17a Gandy Street
Barnstaple 01271 342271, The Square
Bideford 01237 472666, 29 Bridgeland Street
Ilfracombe 01271 863495, 6-9 Market Square
www.brewerhardingrowe.co.uk

*Community
Legal Service*



BIDEFORD TOWN GUIDE

Queen Anne's Dental Practice,
Norborn, Hellyer & MacKenzie,
4 Queen Annes,
High St, Bideford 472159

C R Ryan,
The Dental Surgery,
Abbotsham Road,
Bideford 473705

Pollyfield Dental Practice,
Pollyfield Centre, Avon Road,
Bideford 421323

CHEMISTS

Arnolds Pharmacy,
21 Nelson Road,
Westward Ho! 473829

Lloyds - Medical Centre,
Abbotsham Road, Bideford 472002

Lloyds Pharmacy Wooda
Clarence Wharf,
Barnstaple Street,
Bideford East 421221

Alliance Pharmacy,
2 High Street, Bideford 472019

VETS

Witten Lodge Veterinary Centre Ltd,
Witten Lodge,
Heywood Road, Northam 473278

Torbridge Veterinary Centre,
Unit 9, Caddsdwn Industrial Park,
Bideford 472075

TAXIS

Barry's Taxis 472724

Mr & Mrs Taxis 424294

Scott's Taxis 421487

D & K Cabs/Key Cars 472027

Wes Taxis 472224

SCHOOLS

Bideford College
Abbotsham Road, Bideford 477611
Principal - Miss V Matthews

Edgehill College
Northdown Road, Bideford 471701
Headmaster - Mr S Nicholson



Dragon boats on the Torridge

Grenville College
Belvoir Road, Bideford 472212
Headmaster - Mr A Waters

East-the-Water School
Mines Road, Bideford 475178
Headteacher - Mr M Winter

Pynes County Infant School & Nursery
Coronation Road,
Bideford 473061
Headteacher - Mrs L. Day

St Mary's Primary School
Chanters Road, Bideford 477288
Acting Headteacher - Mr R Fancourt

Westcroft Junior School
Coronation Road, Bideford 473548
Headteacher - Mr P Evans

CLUBS AND SOCIETIES

Please Note the Citizens Advice Bureau
holds lists of all local clubs
and societies 473161

DO YOU NEED TRANSPORT?

- Community Car Service
- Ring & Ride Bus Service
- Community Minibus Hire



Door to door service provided by our friendly & helpful drivers

01237 423232

Volunteer drivers always needed

TORRIDGE POOL & FITNESS SUITE



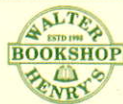
Providing Quality Leisure Facilities for the Communities of Northam, Bideford and the surrounding areas.

Tel: 01237 471794

Churchill Way, Northam, Devon EX39 1SU
www.leisure-centre.com

SeaWind Barclay Curle Ltd undertake all aspects of shipbuilding and repair in our modern workshop facility or on the slipway

New Quay Dock
Hubbastone Road
Appledore
Bideford EX39 1LU
Tel: (01237) 421566
Fax: (01237) 475454
Email: barclay.curle@btconnect.com



Come to Walter Henry's for all your reading requirements.

Including

- All major categories of books
- Large Local Interest Section
- Ordnance Survey Maps
- Computer booksearch
- Special orders welcome

12 High St, Bideford EX39 2AE
Tel: (01237) 425727 Fax: (01237) 471313

www.northdevonbooks.co.uk • Email info@northdevonbooks.co.uk

SKERN LODGE

**ACTIVITIES
TRAINING
EVENTS**

**ADVENTUROUS
ACTIVITIES**
for individuals or groups

**Powerboat, abseiling,
canoeing, climbing, surfing,
high ropes & many more!**

Have fun with friends & family

*Great challenges for
corporate days*

PHONE: (01237) 475992



Sloman's
REMOVALS AND STORAGE

*We are an established
Removal & Storage Firm
with over 30 years experience*

**RESIDENTIAL
& COMMERCIAL**

**LOCAL & UK REMOVALS
UNDERTAKEN**

Estimates FREE ~ Fully Insured

*Little Acorns, Monkleigh
Bideford, Devon EX39 5JP*

*Tel: 01237 475808
Mob: 07966 538370*

www.slomansremovals.co.uk

Food
&
Drink

IN
BIDEFORD

D E C R E A S T A N T K S

Marine Parade, Instow, North Devon, EX39 4JJ


Beachfront location with stunning views
Excellent local seafood a speciality
High quality local produce used
Special occasions catered for
One AA rosette –
Good Food Guide recommended
Open Tuesday to Saturday
Lunch 12.00 to 2.30 • Dinner 7.00 to 9.30



Call now to reserve your table on 01271 860671
www.decksrestaurant.co.uk

The Black Horse Inn

The Square, Torrington
16th Century Coaching Inn



Reputed to be one of the oldest Inns in North Devon and known to have been the headquarters of both General Fairfax and Lord Hopton in the Civil War.

Offering comfortable En-Suite Accommodation
Restaurant Bar Food Four Real Ales
Recommended by the Good Pub Guide and Good Beer Guide
Dave Sawyer Tel: 01805 622121
North Devon Good Food Award Overall Winners



EAST-OF-THE-WATER

WEST OF THE ORIENT
Chinese Restaurant
Barnstaple Street
Bideford EX39 4AE
Tel: 01237 425329

Orchard Hill Hotel



Orchard Hill, Bideford
North Devon EX39 2QY
Tel: 01237 472872 Fax: 01237 420753
Website: www.inlovewithdevon.co.uk
7 Bedrooms • B&B £30 to £36
• Open All Year

A warm welcome awaits you at the Orchard Hill Hotel
The Hotel is situated overlooking the river Torridge and the little white town of Bideford. Elegant guest lounge and dining room with licensed bar. Large car park.

All bedrooms are en-suite with colour TV, tea/coffee facilities.
Perfect location for touring, cycling, walking, and golfing in North Devon.

TRAWLERS



- Traditional Fish & Chips
- Licensed Restaurant & Take Away
- Southern Fried Chicken
- Open 7 days a week

38 Mill Street, Bideford, North Devon,
Telephone 01237 423423

THREE'S
Coffee Shop and Internet Cafe



Open 8am to 9pm later Fri/Sat
Open Late

Wireless • Web Cam • Latest PC's
Broadband • Licensed Bar
Great Coffee • Cool Drinks • Hot Snacks



Visit us at - <http://www.threecs.net>
6 Cooper Street - Bideford 478881

Find your
Retail Therapy

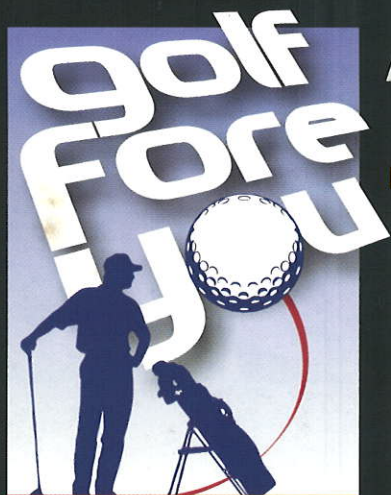


- Up to **50% off** rrp every day
- Over 35 famous name stores
- Ample FREE parking
- Fantastic family fun at Atlantis Adventure Park and Kids Cove



Where value never goes out of fashion

Mon-Sat 10am-6pm Thurs 'til 8pm Sun 10.30am-4.30pm
Clovelly Road, West of Bideford off the A39 Atlantic Highway Follow brown signs
Tel: 01237 422 544 www.atlanticvillage.co.uk



www.golfforeyou.co.uk

Another perfect day for Golf!

North Devon's Premier Virtual Golf Centre

From only £5 per session

- 29 magnificent courses to choose from – including St Andrews
- Feel as though you're really there, with state-of-the-art technology
- Avoid the winter weather – stay warm and dry but play for real!
- Virtual game, virtual practice or virtual contests
- Play all your shots including bunker shots, chipping and putting
- Full golf analysis and custom fit available
- Ideal for beginners and experienced golfers

Memberships available

Book now by telephoning **01237 477757** or by emailing harbourleisure@aol.com
Caddsdow Industrial Park, Clovelly Road, Bideford, North Devon EX39 3DX.

BIG BRANDS • BIG SAVINGS • BIG SPORTS!



adidas

HI-TEC

errea

PUMA

UMBRO

Stockists of most major sporting brands - whatever your sport.
Main Devon distributors of Errea Sportswear.

Harbour
Leisure & Golf

21 High Street, Bideford EX39 3AA. Telephone: 01237 422100.
www.harbourleisure.co.uk harbourleisure@aol.com